

Larry S. Helms
& Associates
INSURANCE SERVICES

704.893.2793
www.LarryHelms.com

November 2022

Holiday Decoration Safety



**Deck the halls, and trees, and furniture, and everything else.
Be festive. Have fun! Please be safe.**

Below are some of the normal safety tips we all need to know.

Holiday Decoration Safety

Candles. If you use real candles, remember to blow them out! Also, keep them away from material (curtains, furniture, clothing, etc.) that can catch fire. And away from pets and small children.

Cords. Check your cords for damage or fraying. And remember not to overload extension cords or outlets.

Outside/Inside. Check any decorations and lights you use outside to make sure they are for outside use.

Artificial Tree. Artificial trees should have a fire resistant label. And keep it away from fireplaces or any source of heat.

Live Tree. Keep your live tree watered. Also, stay aware of how long the lights are on, keep them from getting hot.

Fireplace. Be aware of decorations and stockings you have around or hanging from the fireplace. It would be easy for them to catch fire.

Old Decorations. Check those old decorations for lead-based components or paint.

Traffic. Check all our decorations and cords, make sure nothing is in normal pathways that would cause tripping.

Read more: redcross.org/about-us/news-and-events/news/10-ways-to-stay-safe-while-decorating-for-the-holidays.html and firstenergycorp.com/help/safety/using-electricity/holiday-decorating.html and www.cpsc.gov/s3fs-public/611.pdf

Gingerbread House Day



Gingerbread House Day on December 12th recognizes a family tradition for many around the country.

A favorite food of an Armenian monk, Gregory of Nicopolis, brought gingerbread to Europe around 992 AD and taught French Christians to bake it. Since gingerbread was often used in religious ceremonies, monks baked to be sturdy to molded into images of saints.

We can thank the Brothers' Grimm for a gingerbread house, though. Through their tale of *Hansel and Gretel*, they introduce an evil witch who lives in a house made of gingerbread. It didn't take long for the German gingerbread guilds to pick up the idea. Soon, they put gingerbread houses to a more festive use making snowy cottages made from the spicy-sweet treat.

Photo and Source: nationaldaycalendar.com/gingerbread-house-day-december-12/

LarryHelms.com - Our Team can find the right solution for you!

Beth Atkinson



**Service
Consultant/Producer**

☎ 704-893-2793 ext 313

Pedro Blancas



Producer

☎ 704-893-2793 ext 310

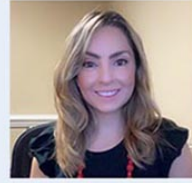
Teri Bunch



Producer

☎ 704-893-2793 ext 301

Catherine Hoyo Mu



Producer

☎ 704-893-2793 ext 309

Paul Kaperonis



Producer

☎ 704-893-2793 ext 308

Ashlyn Lingle



**Personal Lines Account
Manager**

☎ 704-893-2793 ext 316

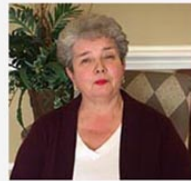
Karen Loughery



**Personal Lines Account
Manager**

☎ 704-893-2793 ext 314

Lettie Palmer



**Commercial Lines
Account Manager**

☎ 704-893-2793 ext 302

Robert Ross



Producer

☎ 704-893-2793 ext 304

Dolores Serrano



**Commercial Lines Account
Manager**

☎ 704-893-2793 ext 306

Jim Short



**Commercial Lines Account
Manager**

☎ 704-893-2793 ext 312

Chris Webb



Producer

☎ 704-893-2793 ext 305

Larry S. Helms
& Associates
INSURANCE SERVICES

Larry S. Helms & Associates Insurance Services
4389 Indian Trail Fairview Rd., Suite 2, Indian Trail, NC 28079

704.893.2793

