

## Holiday Plants



### Most Popular

**Poinsettia** - No plant symbolizes Christmastime quite like the poinsettia, especially the ruby-red variety. It might surprise you to learn that the red blooms are not the flowers; they are bracts or modified leaves! It's an unlikely Christmas plant, since it's native to Mexico, but it flowers during their winter and has become associated with the winter holidays.

**Christmas Cactus** - The Christmas cactus has become the recent favorite of the Christmas plants. It's a succulent houseplant with petals that bloom in a kaleidoscope of colors including red, white, pink, cream, and fuchsia.

**Amaryllis** - Although amaryllis can be purchased at any stage of development, for many, the real fun is growing their own plant from a bulb. Most amaryllis bulbs are sold already potted and with complete growing instructions. Once watering is started, you can expect magnificent, lily-like blooms of red, pink, white, or orange in four to six weeks.

**Cyclamen** - With up-swept petals and pretty foliage, the cyclamen comes in cheerful red as well as white and pink. These plants like bright, indirect light and need to have their soil

kept moist (but not soaked). If kept too warm, they will go dormant, meaning that they'll stop blooming and drop foliage.

**Christmas Tree** - And of course, there's the Christmas tree! There's something special about a fresh-smelling tree. The best-selling evergreens come Christmas time include Balsam, Douglas and Fraser firs. And don't forget to recycle that Christmas tree when the holidays are over.

Sources: [almanac.com/christmas-plants-flowers](http://almanac.com/christmas-plants-flowers)

## Best for Decoration

**Amaryllis** - Prized for their ability to bloom indoors, these exotic-looking flowers bloom about four to six weeks after you plant the bulb.

**Orchid** - These delicate-looking plants are not as fragile as they appear and will bloom for months with little care, maybe even into the spring.

**Christmas Cactus** - Christmas cacti are so pretty, they just might rival the beauty of the ornaments on your tree. Different species bloom at different times of year, including Thanksgiving and Easter.

**Poinsettia** - Poinsettias are nearly as classic as Christmas movies! If you chose a plant that's shedding pollen or the yellow flowers have dropped off, it's past its prime and won't last through the season.

**Christmas Tree** - Whether you're cutting down your own evergreen or selecting a pre-cut tree, check for insects and pests as well as any damage, such as broken branches. Test the freshness of a pre-cut tree by pulling on a branch; they should be flexible without a handful of needles coming off in your hand. Also, does it have a nice green color? Does it smell fresh?

**Cyclamen** - These cool-season plants tolerate temperatures into the 40s, which is why they're popular in the winter months. They can bloom for more than eight weeks with the right conditions.

**Norfolk Island Pine** - This long-lasting plant is native to the South Pacific. It makes a great tabletop tree if you don't have room for a big one, but its branches tend to get weighed down easily, so stick with lightweight ornaments.

**Frosty Fern** - These adorable tiny fern-like plants tinged with white are a newcomer to the holiday lineup. Keep them on your dining room table or desk; just the sight of them will inspire some seriously meaningful Christmas card messages!

**Paperwhites** - These often come in kits or loose bulbs with a planting medium. Pot them up and enjoy the fragrant blooms in two to three weeks.

**Rosemary** - This kitchen staple makes a hardy indoor or outdoor bush, often sheared into a topiary or pyramidal shape to mimic a Christmas tree. Its fresh piney scent is invigorating in the middle of a dreary winter and of course makes a savory addition to roasts.

Sources: [countryliving.com/gardening/g3869/christmas-plants/](http://countryliving.com/gardening/g3869/christmas-plants/)

## Pet Friendly

**Holiday Cactus** - Whether you choose a Christmas cactus or Thanksgiving cactus, these plants won't harm your pets. Both types of holiday cactus produce beautiful flowers in pink, red, yellow, or white. Not only can the holiday cactus live for decades, but it's also a fuss-free plant to grow.

**Moth Orchid** - A moth orchid is a beautiful choice for anyone who loves the look of fresh-cut flowers but wants something longer-lasting. Keep your orchid in a spot where it'll receive medium to bright indirect light. Moth orchids only need water every 10-14 days when the bark or moss in the pot feels dry.

**Pinstripe Calathea** - The lush foliage of the pinstripe calathea features green leaves with streaks of bright pink lines. The easy-to-care-for houseplant prefers medium to bright indirect light and needs water every one to two weeks.

**Silver Vase Bromeliad** - Brighten up your space and holiday displays with this gorgeous bromeliad that can bloom for up to 6 months out of the year. The low-maintenance houseplant likes partial to bright indirect light. Also known as urn plant, this bromeliad has an interesting feature when it comes to watering. You add water to the center of the plant (the urn formed by the leaves), as opposed to the soil.

**Pink Polka Dot Plant** - The pink polka dot plant is another colorful holiday houseplant option. Give this little plant bright indirect light and moist soil. Polka dot plant does best with high humidity so try it in a terrarium or brightly-lit bathroom.

**Large Majesty Palm** - A tall majesty palm can stand in for a Christmas tree if your pets won't leave the real deal alone. The indoor tree likes bright indirect light and needs water every one to two weeks or when the soil is dry to the touch.

Sources: [bhg.com/gardening/houseplants/projects/pet-friendly-holiday-houseplants](https://bhg.com/gardening/houseplants/projects/pet-friendly-holiday-houseplants)

---

## Time for those Ugly Sweaters we all LOVE!



Source: [daysoftheyear.com/days/ugly-christmas-sweater-day/](https://daysoftheyear.com/days/ugly-christmas-sweater-day/)

---

[LarryHelms.com](https://LarryHelms.com) - Our Team can find the right solution for you!

**Beth Atkinson**



**Commercial Lines  
Account Manager**

☎ 704-893-2793 ext 313

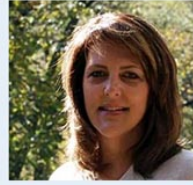
**Pedro Blancas**



**Producer**

☎ 704-893-2793 ext 310

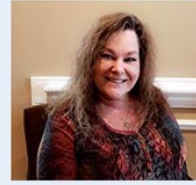
**Teri Bunch**



**Producer**

☎ 704-893-2793 ext 301

**Crystal Hartis**



**Commercial Lines  
Account Manager**

☎ 704-893-2793

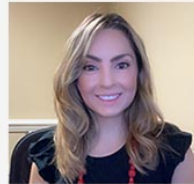
**Carol Huff**



**Producer**

☎ 704-893-2793 ext 320

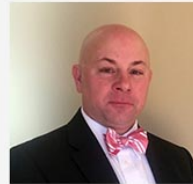
**Catherine Hoyo Mu**



**Producer**

☎ 704-893-2793 ext 309

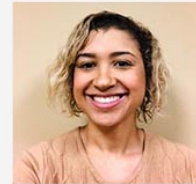
**Paul Kaperonis**



**Producer**

☎ 704-893-2793 ext 308

**Ashlyn Lingle**



**Personal Lines  
Account Manager**

☎ 704-893-2793 ext 316

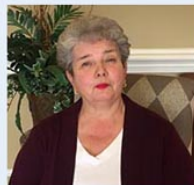
**Karen Loughery**



**Personal Lines  
Account Manager**

☎ 704-893-2793 ext 314

**Lettie Palmer**



**Commercial Lines  
Account Manager**

☎ 704-893-2793 ext 302

**Meredith Privette**



**Commercial Lines  
Account Manager**

☎ 704-893-2793

**Robert Ross**



**Producer**

☎ 704-893-2793 ext 304

**Dolores Serrano**



**Commercial Lines  
Account Manager**

☎ 704-893-2793 ext 306

**Jim Short**



**Commercial Lines  
Account Manager**

☎ 704-893-2793 ext 312

**Chris Webb**



**Producer**

☎ 704-893-2793 ext 305

**Larry S. Helms**  
& Associates  
INSURANCE SERVICES

Larry S. Helms & Associates Insurance Services  
4389 Indian Trail Fairview Rd., Suite 2, Indian Trail, NC 28079

**704.893.2793**

